



QUICK-START GUIDE TO USING YOUR CHROMEBOOK

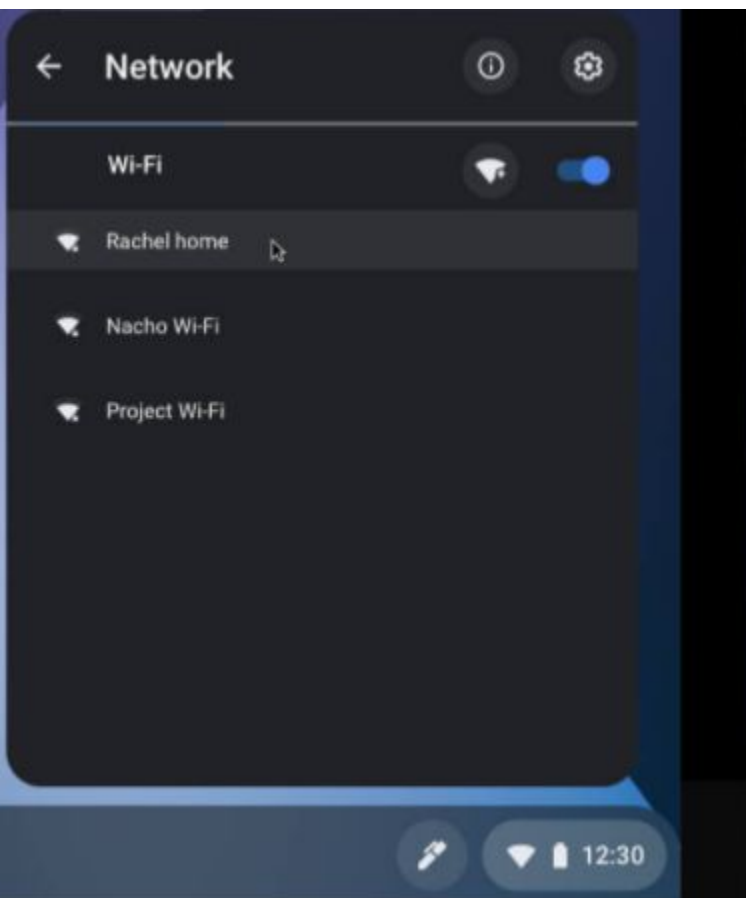
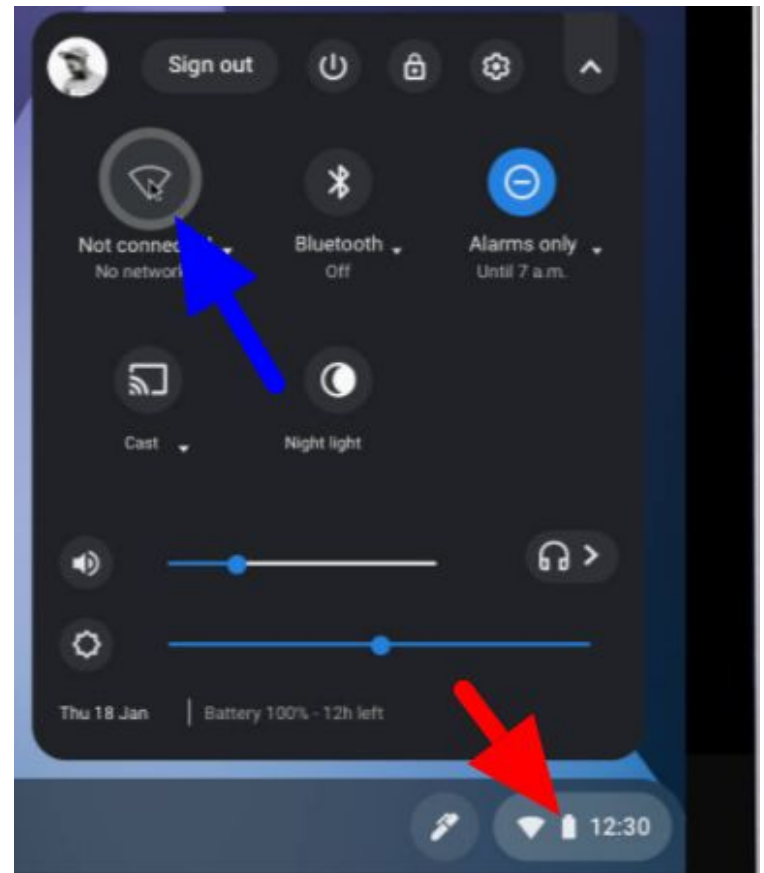
- 1. HOW DO I GET MY CHROMEBOOK ON MY HOME WIRELESS?**
- 2. HOW DO I GET TO GOOGLE CLASSROOM?**
- 3. HOW DO I JOIN MY CLASSES?**
- 4. I DON'T HAVE WIRELESS, HOW DO I USE MY PHONE AS A HOTSPOT?**



HOW DO I GET MY CHROMEBOOK ON MY HOME WIFI?

Click on the time in the bottom right corner of the screen where the red arrow is.

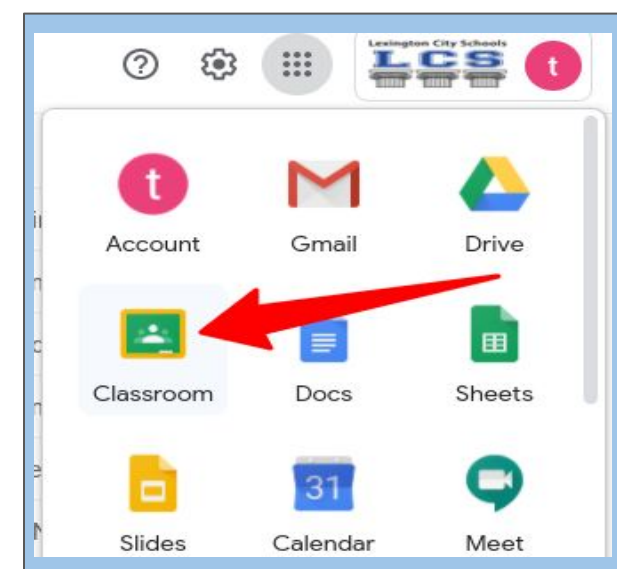
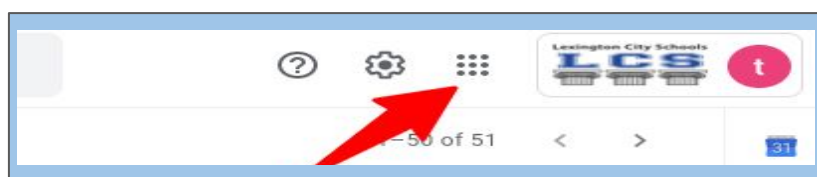
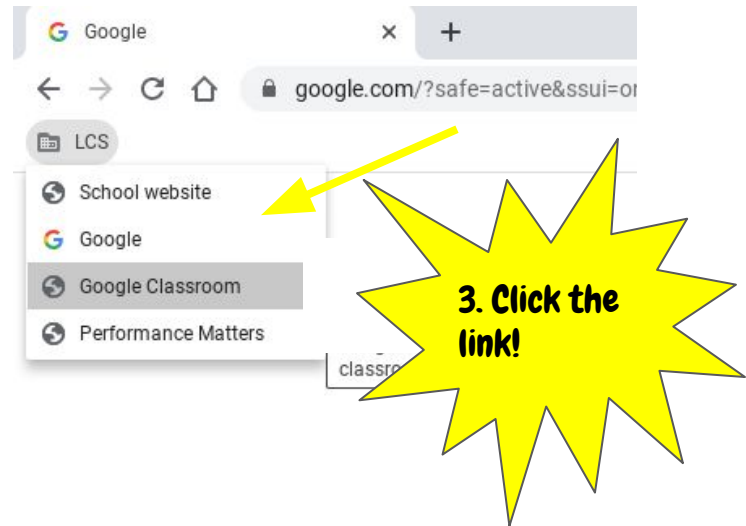
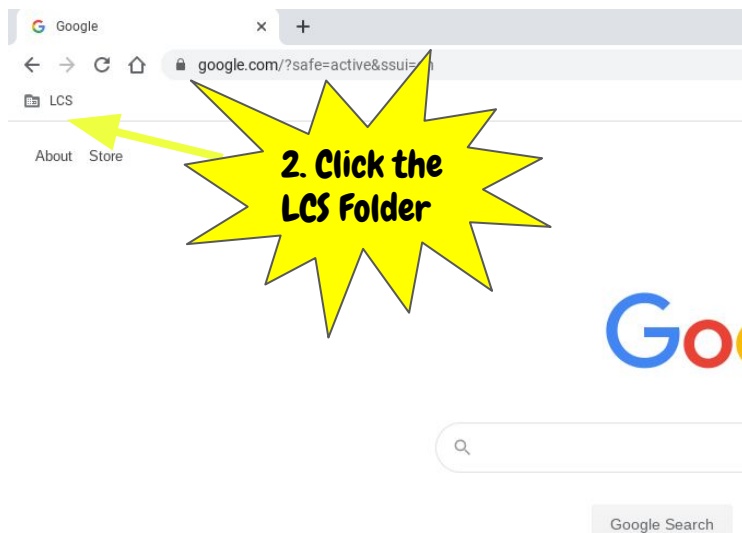
Now click the wifi icon where the blue arrow is.



Find your home's wifi name and click on it. Type the password in and you're finished!

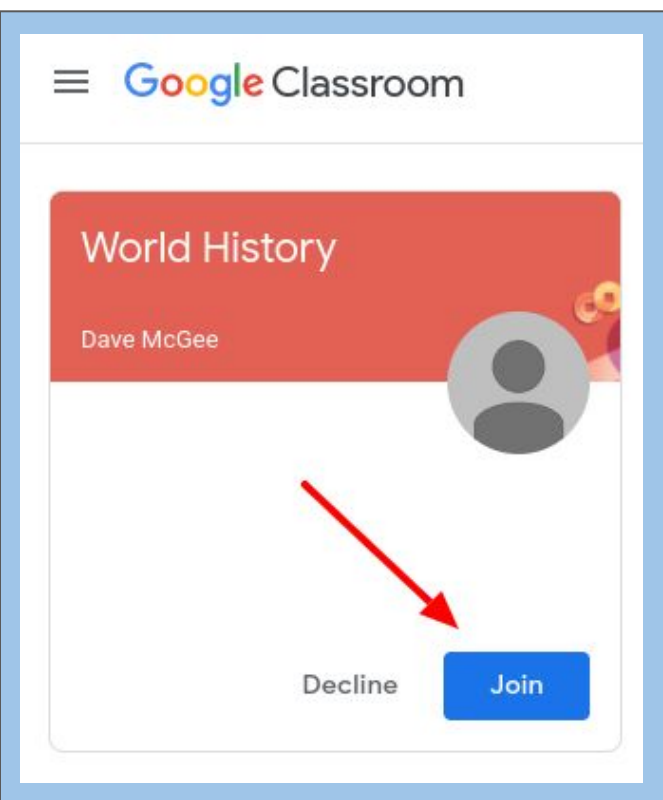
HOW DO I GET TO MY GOOGLE CLASSROOMS?

1. Open Chrome first

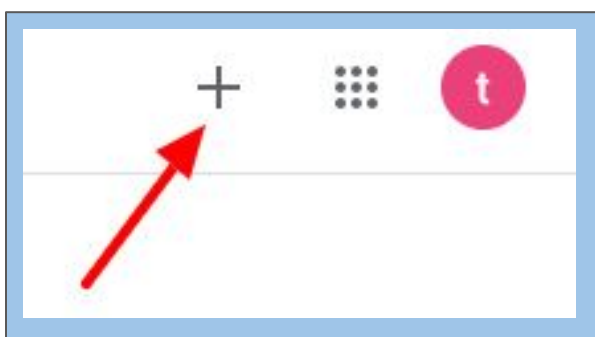


1. You can also get to classroom from the “waffle” icon in most Google apps!

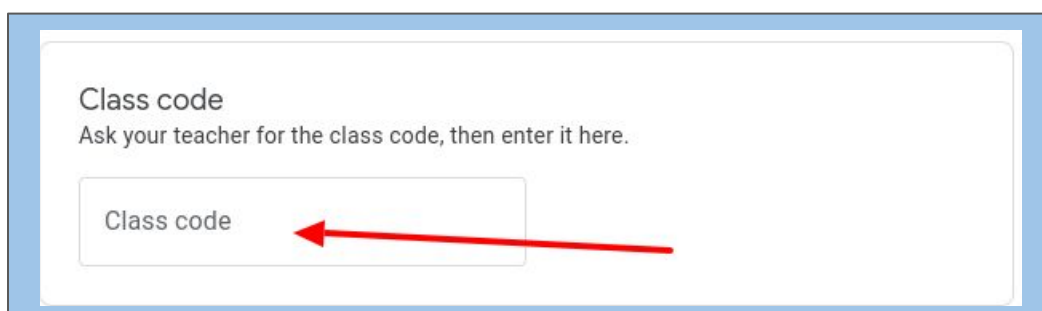
HOW DO I JOIN A CLASS IN GOOGLE CLASSROOM?



There are two ways. If your teacher invited you, just go to classroom and click join!



If your teacher sent you a code, click the plus sign and enter the code.

A screenshot of the 'Class code' entry screen. It has the text 'Class code' and 'Ask your teacher for the class code, then enter it here.' Below this is a text input field with the placeholder text 'Class code'. A red arrow points from the right side towards the input field.



QUESTIONS?



**Ask your teacher, or email
student_support@lexedu.org**

**Or look for the “Technology Help for Families”
link on our website!**